



# 2014 Student Drug Use Survey

## Alcohol and Drug Consumption by Youth in Greater Cincinnati

Results from the Coalition for a Drug-Free Greater Cincinnati 2014 Student Drug Use Survey

Special thanks to:

- Charles H. Dater Foundation
- Cincinnati Children's Hospital Medical Center
- City of Cincinnati Police Department
- Clinton County Family and Children First Council
- Hamilton County Mental Health Recovery Services Board
- Interact for Health
- Keith King, PhD, MCHES
- Local Coalitions
- Mercy Health Partners
- Ohio Department of Mental Health and Addiction Services
- Other organizations who facilitated the implementation of this survey
- PRIDE Surveys, Inc.
- School Participants
- Western & Southern Foundation

Topic summaries and regional key findings from 2000 to 2014 are available at [www.DrugFreeCincinnati.org](http://www.DrugFreeCincinnati.org)

Aggregate raw data in SPSS format is available on OASIS through [www.OASIS.uc.edu](http://www.OASIS.uc.edu)

The Coalition for a Drug-Free Greater Cincinnati promotes drug-free environments for youth by enhancing partnerships to educate, advocate and support locally-based community mobilization.

### The Student Drug Use Survey

The Student Drug Use Survey is a project of the Coalition for a Drug-Free Greater Cincinnati that provides in-depth analysis of the self-reported drug use patterns of area youth. Every two years, the Coalition implements the unprecedented Student Drug Use Survey to collect youth drug use data from seventh through twelfth graders throughout the 10 county Greater Cincinnati area. The survey is recognized across the region and nationally as a current and reliable source of validated information on local youth substance abuse and other health behaviors and is the largest of its kind in the country.

| Measure                  | Alcohol | Cigarettes | Marijuana | Prescription * |
|--------------------------|---------|------------|-----------|----------------|
| Past 30-Day Use (%)      | 17.8    | 9.8        | 11.4      | 4.3            |
| Perceived Harm/Risk (%)  | 69.3    | 90.6       | 67.6      | 88.3           |
| Parental Disapproval (%) | 85.7    | 93.9       | 92.8      | 96.1           |
| Friend Disapproval (%)   | 57.4    | 75.0       | 69.9      | 86.2           |
| Age of First Use (yrs.)  | 13.4    | 12.5       | 13.8      | 13.3           |

\* Non-medical use

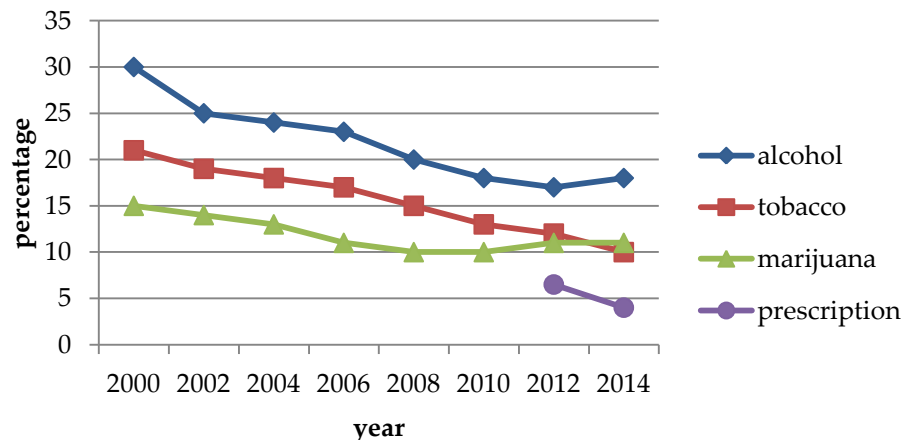
### Demographics of Survey Respondents

The data is representative demographically of the region. It represents a census of the tri-state area's 7th-12th grade student population.

### Methodology

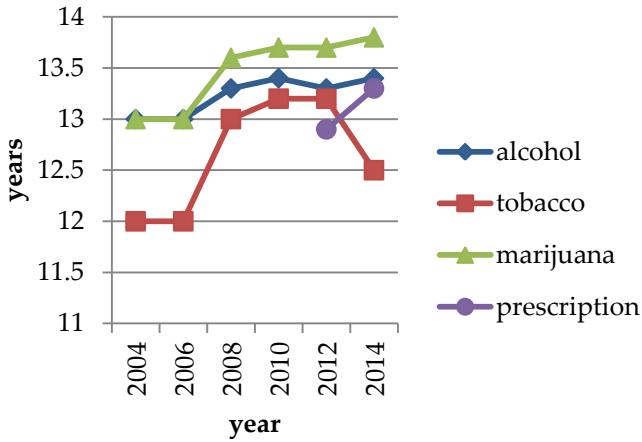
A total of 56,708 seventh through twelfth grade students from 107 public and private schools in Brown, Butler, Clermont, Clinton, Hamilton and Warren counties in Ohio, and Campbell county in Kentucky completed the localized version of the PRIDE questionnaire between September 3, 2013 and December 16, 2013. No sampling was conducted. Every student in school on the day the survey was administered completed the survey. No surveys were conducted outside of the school building.

### Past 30-Day Use

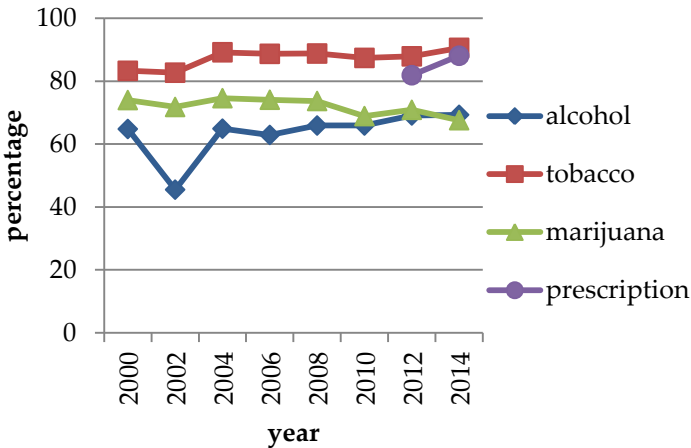


# Facts & Figures

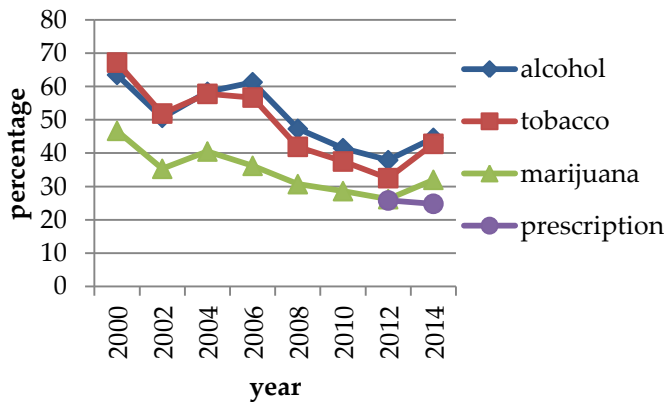
## Age of First Use



## Perception of Harm/Risk



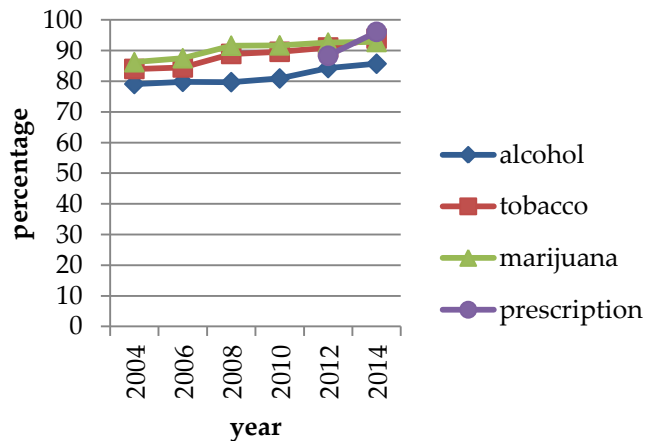
## Ease of Availability



# Conclusions

- Cigarette and prescription drug use is trending downward. Past 30-day use of alcohol and marijuana has increased slightly.
- Students report using tobacco earlier than prescription drugs, alcohol and marijuana.
- Tobacco and prescription drugs are perceived more harmful to health than alcohol and marijuana.
- Alcohol and tobacco are perceived to be easier to obtain than marijuana and prescription drugs.
- Parental Disapproval of adolescent substance use continues to improve.
- Friend Disapproval of peer substance use continues to improve.

## Parental Disapproval



## Friend Disapproval

